





CC Maurienne Galibier - Ecole St Michel  
Du 01/06/2026 au 05/06/2026

Menu

api



Lundi

Chou fleur CE2  - Sauce façon cocktail  
Emincé de cuisse de poulet  - Sauce barbecue  
/Jambalaya aux légumes  
Boulgour  
**Gouda Bio**   
Pomme VER 






Mardi

Carottes râpées - Vinaigrette à la framboise  
Filet de saumon MSC  - Sauce au curry doux  
Potatoes  
Yaourt nature BIO GAEC La Grange    
Gaufre liégeoise




Mercredi

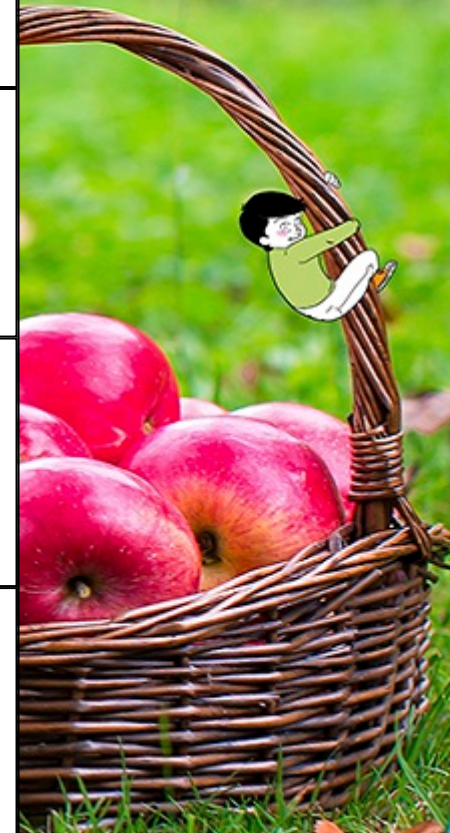
Cake du chef olives et féta   
Salade de **fusilli Bio** méridionale   
Buchette lait mélange  
Banane 

Jeudi

Courgette râpée - Vinaigrette  
Tomate farcie  
/Tomate fraîche façon tomate farcie (**émincé de pois Bio**)   
**Le rond HVE de la ferme des Ayguees (régional)**    
Compote fraîche **pomme Bio** framboise  

Vendredi

Concombre - Vinaigrette au fromage blanc  
Jambon blanc issu de porc Label Rouge   - Sauce mayonnaise  
/Oeufs durs - Sauce mayonnaise  
Salade de **coquillettes Bio**, tomate et maïs  - Vinaigrette  
Suisse fruité  
Pastèque



CC Maurienne Galibier - Ecole St Michel  
Du 01/06/2026 au 05/06/2026

Goûters



api

Lundi

Compote pomme  
Gallettes bretonnes

Mardi

Pain  
, confiture abricot

Mercredi

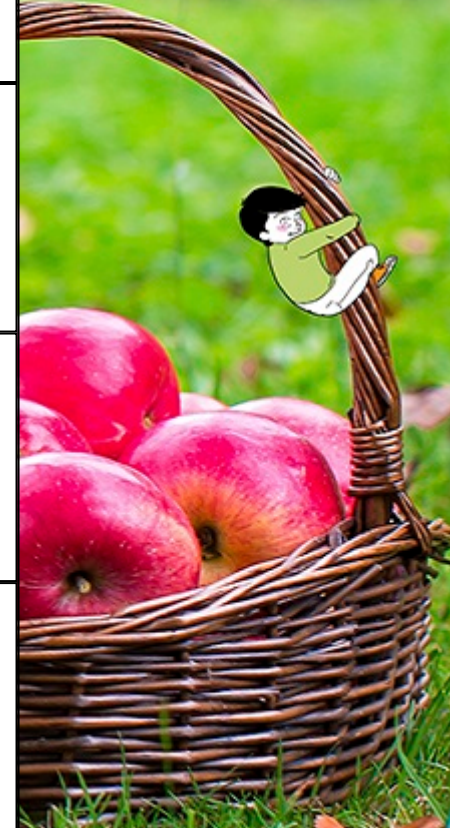
Yaourt nature  
Madeleine

Jeudi

Fruit de saison  
Moelleux au chocolat

Vendredi

Pain au lait  
Barre de chocolat



*Nos menus sont susceptibles de modifications en fonction des approvisionnements  
Veuillez vous référer au corps du bon de livraison, ci-dessous pour l'origine des viandes.*